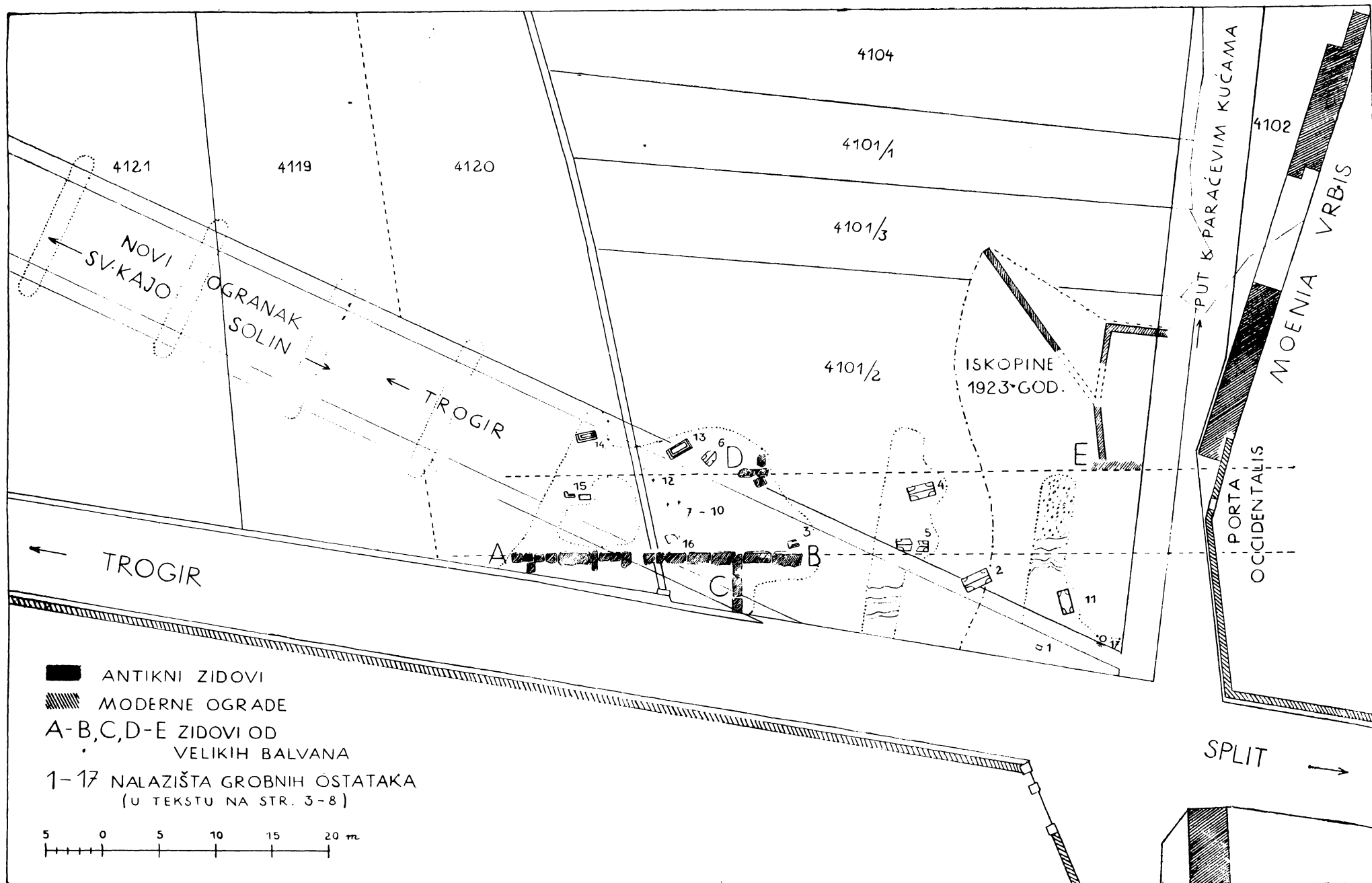


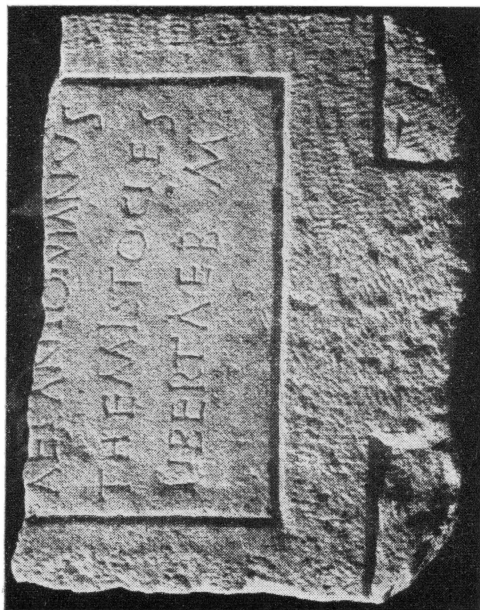
# TABLE



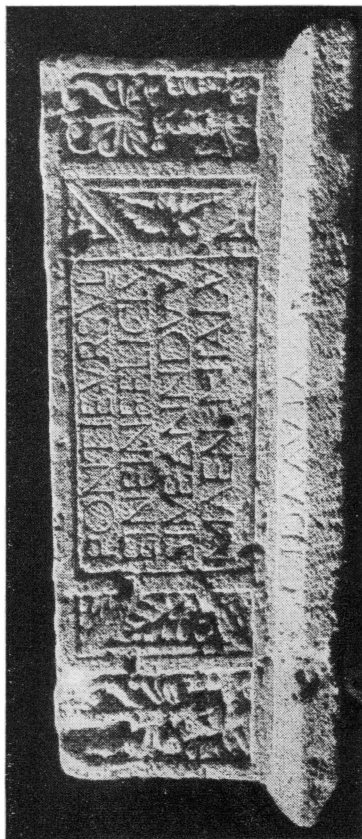
TLORIS  
ARHEOLOŠKIH ISTRAŽIVANJA  
U ZAPADNOJ NEKROPOLI STARE SALONE



2

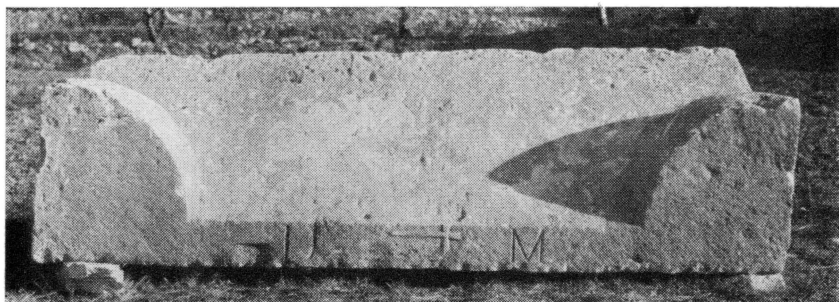


1

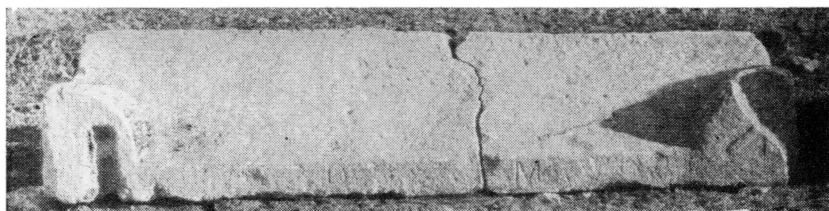


3

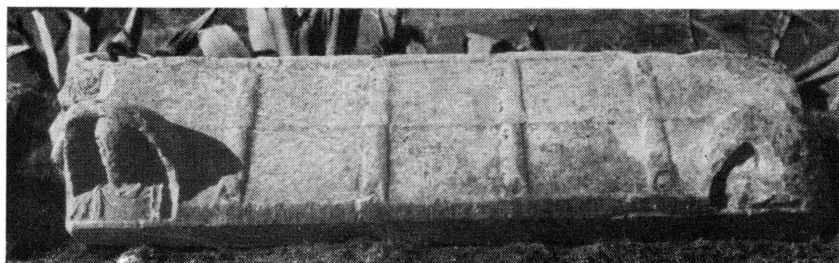
1: Ulomak nadgrobne stele; 2: Poklopac velikog sarkofaga;  
3: Mali sarkofag bez poklopca



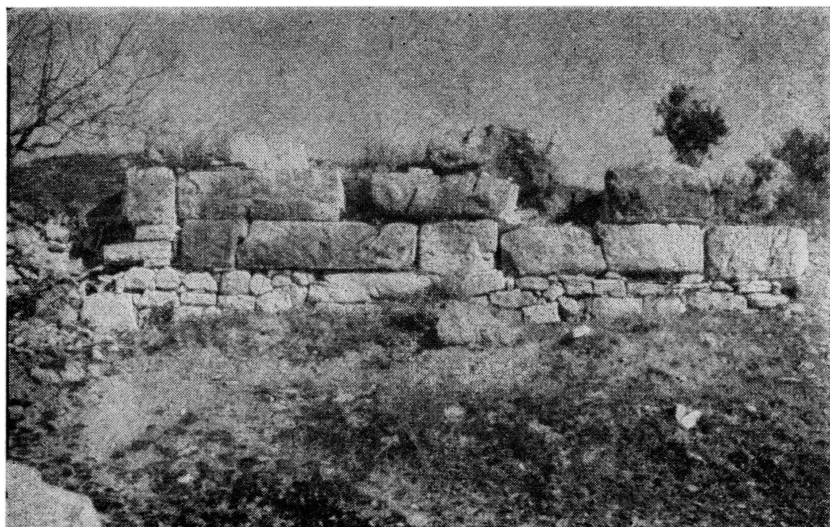
*Poklopac sarkofaga*



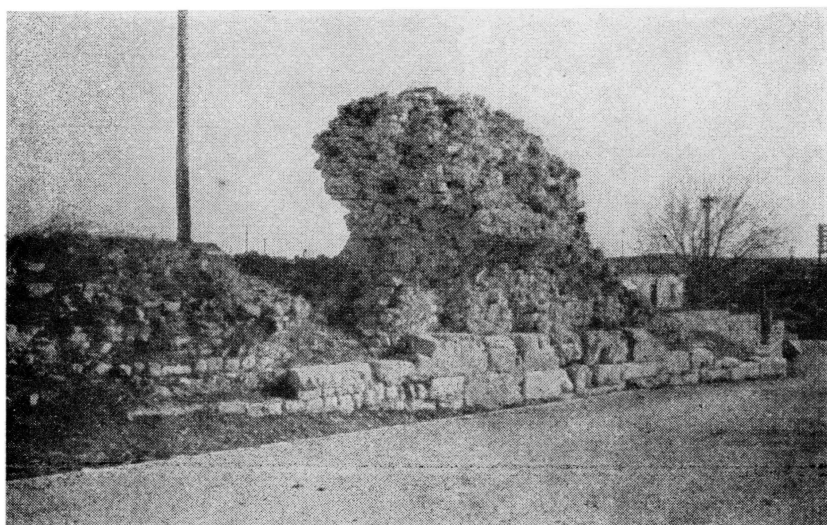
*Prelomljeni poklopac sarkofaga*



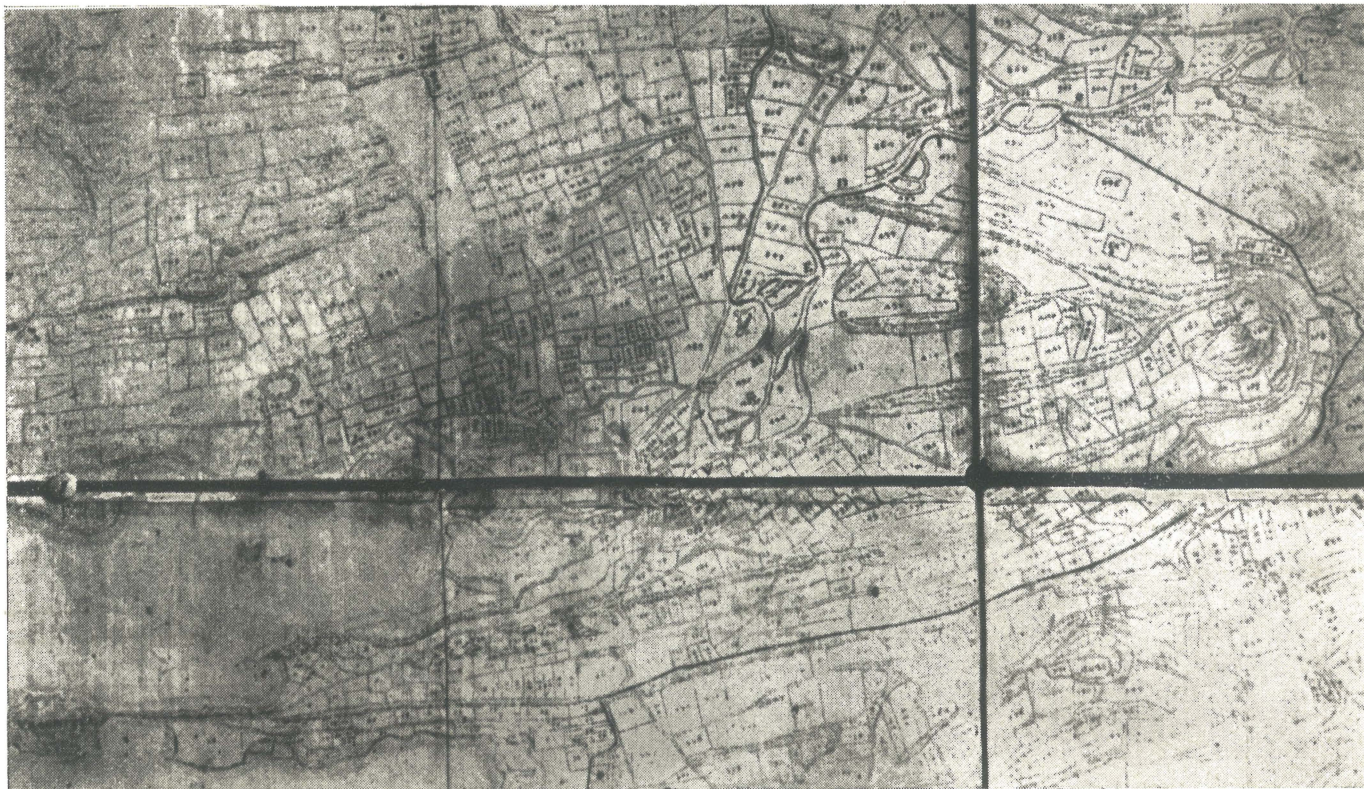
*Poklopac sarkofaga sa poprsjima u akroterijima*



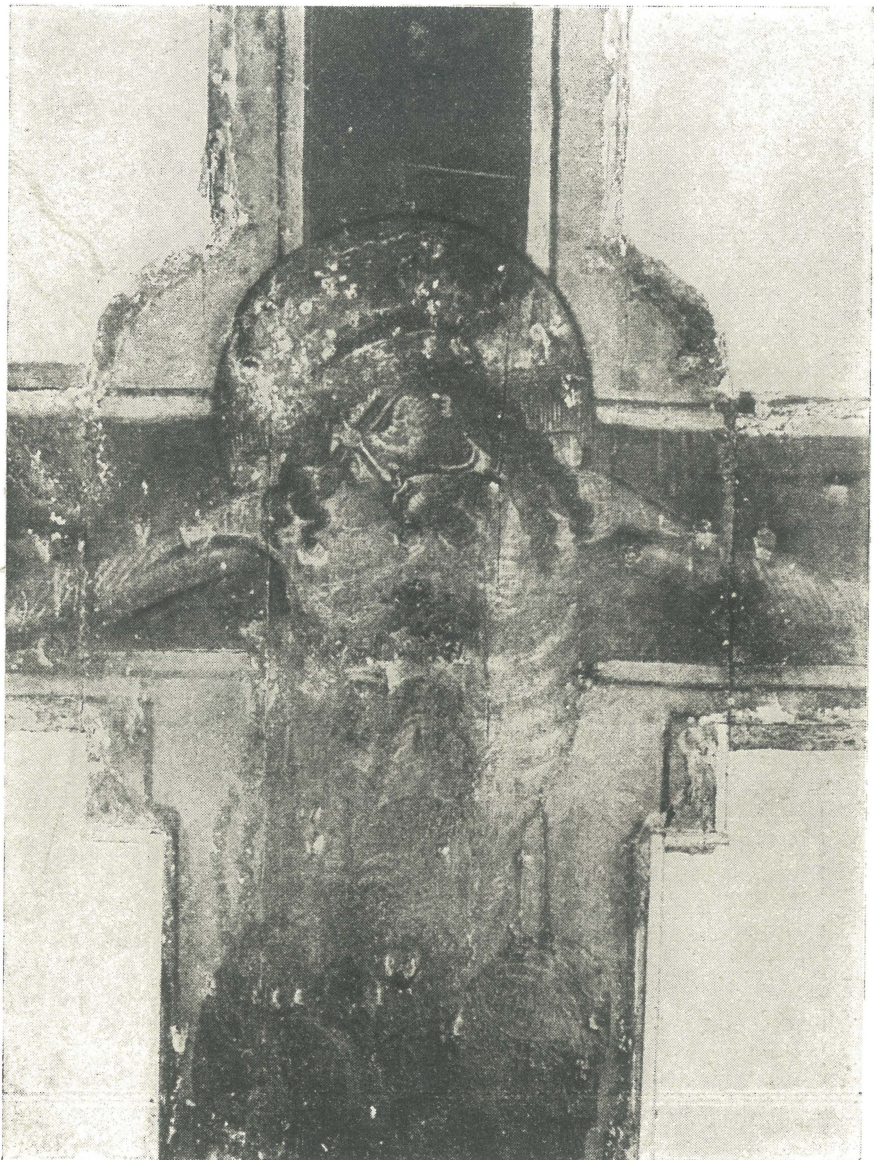
*Veliki balvani u zapadnom bedemu Salone*



*Zapadni zidani bedem Salone, pojačan velikim balvanima*



*Karta solinskog polja iz 17. stoljeća u zadarskom arhivu*



*Slikano raspelo u samostanu Klarisa u Splitu (detalj)*

Ubeznice od zivota  
i diti flateboga  
fluffa i maxche que  
gone flanne dimer  
civare

Uhoje smisli i upisa. Doctonari. Juna  
car poctare casti dostoyri. Otac za  
jurav zebich. hvarariz. slava. pripo  
midanac rida. smitoga. Dominichia.  
Chopi. cichia. smigona. rida. rida. rida.  
xinata. bij. dualchor. provincial.  
od Dalmatini. meliri. boga. za. smigona.  
Ava. raluca. oracum. raluca. raluca. raluca.  
foni. raluca. raluca. raluca. raluca. raluca.  
raluca. raluca. raluca. raluca. raluca. raluca.  
raluca. raluca. raluca. raluca. raluca. raluca.  
raluca. raluca. raluca. raluca. raluca. raluca.  
raluca. raluca. raluca. raluca. raluca. raluca.



1 2 3 4 5 6 7  
P14042 British Museum Add. 11578  
1 2 3

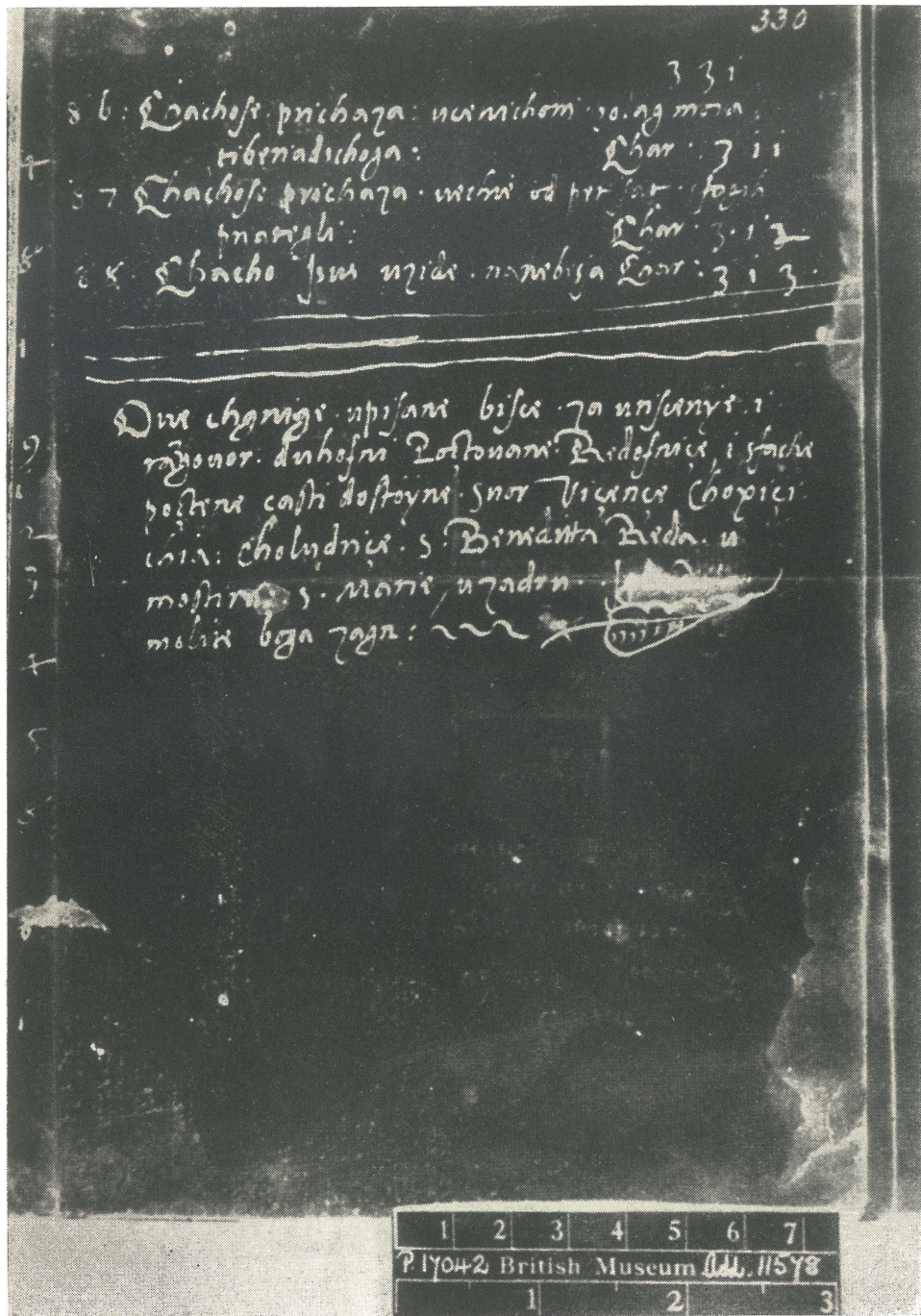
## Doerique pistula

Q uoye pravi puvst hodire pogremu i nemoy  
 rre suarhian ni nadione ni na lino

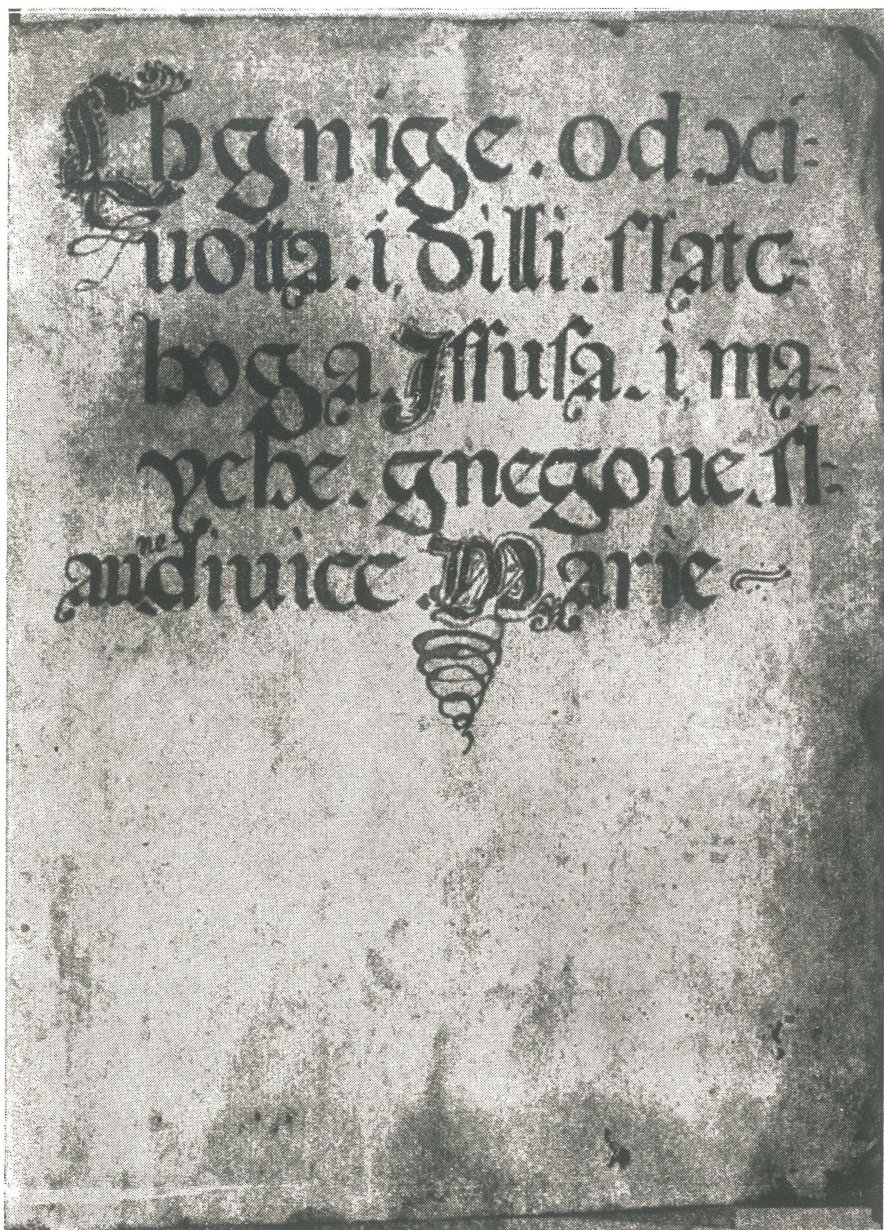
Que rici yusu pisane u Ezary prarion  
 na mid'itu glanu.

U rre nicholicho unimena sestra Draga  
 u dragost. slar-choga Susja. Da mi h zlim  
 i maslim chachobihuan yose wiber, am  
 himbini suir omrajil. <sup>cho</sup>chachuan dem  
 st Sussem. uduhoum ximr. sasum nichupel  
 schachobianam yose wiber, slar-choga Susja  
 ytdnim nepomrtim usayinyim. uduhu su  
 Jarce u sadel, choye usaynye mbi mogla  
 nuedna jilla, ni supratifichina onga jura  
 izgulit tacho miltchi suarhu rga doycu  
 ni naspamet, da nuedna chupost, nuydan  
 nanch: nemore tacho hortgnut ansen. i jar  
 ce nase. Ja Sussem: choliho wsta, i demoto  
 razmijguanye slannega xizota, i dilli  
 susowich i mayibe gngom. ac agodidit  
 sus ucini ali nca na ovom lita. i fi u,  
 uini i nca, na nate nanch, i da nas pi  
 rami.

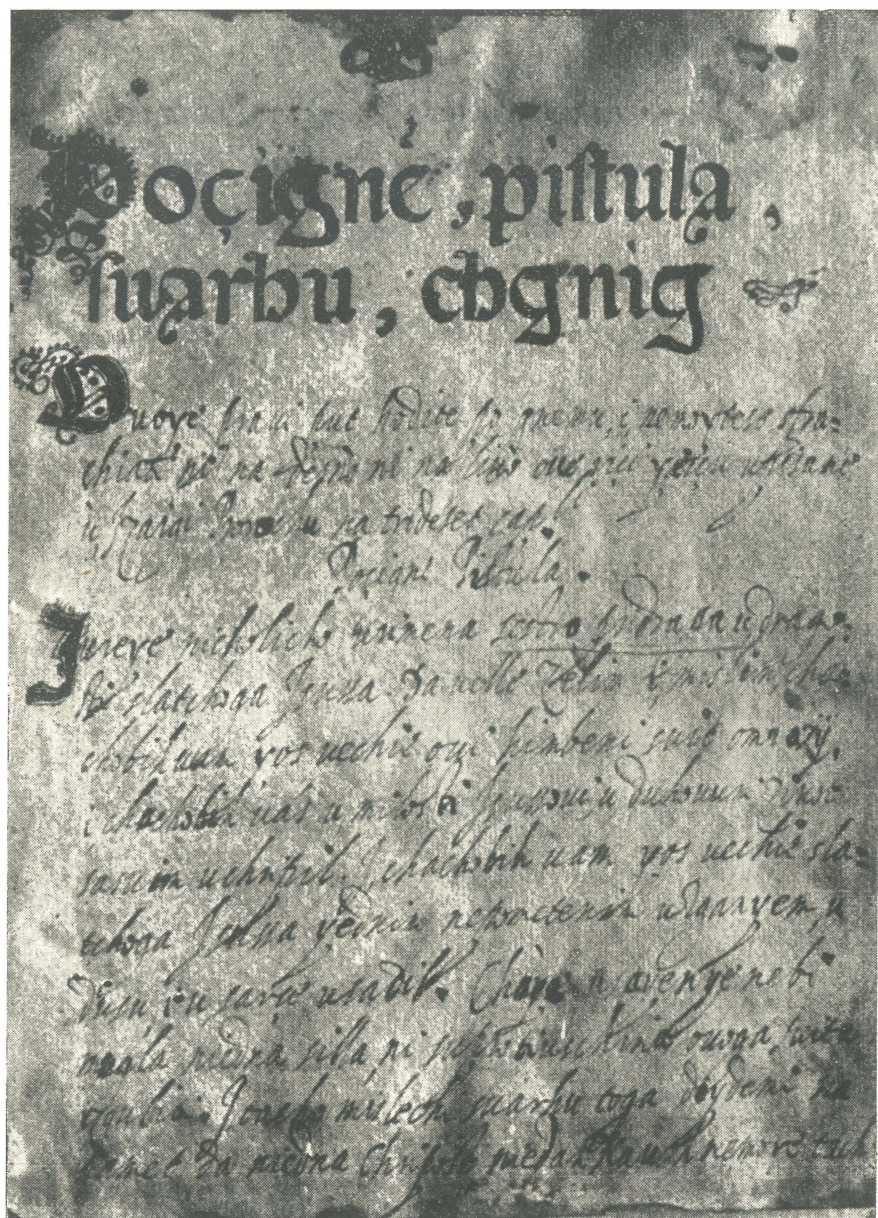
1	2	3	4	5	6	7
P. 1704-2 British Museum Add. 11578						
	1			2		3



Rukopis O. Polovinića u Brit. Muzeju u Londonu (zadnji list)



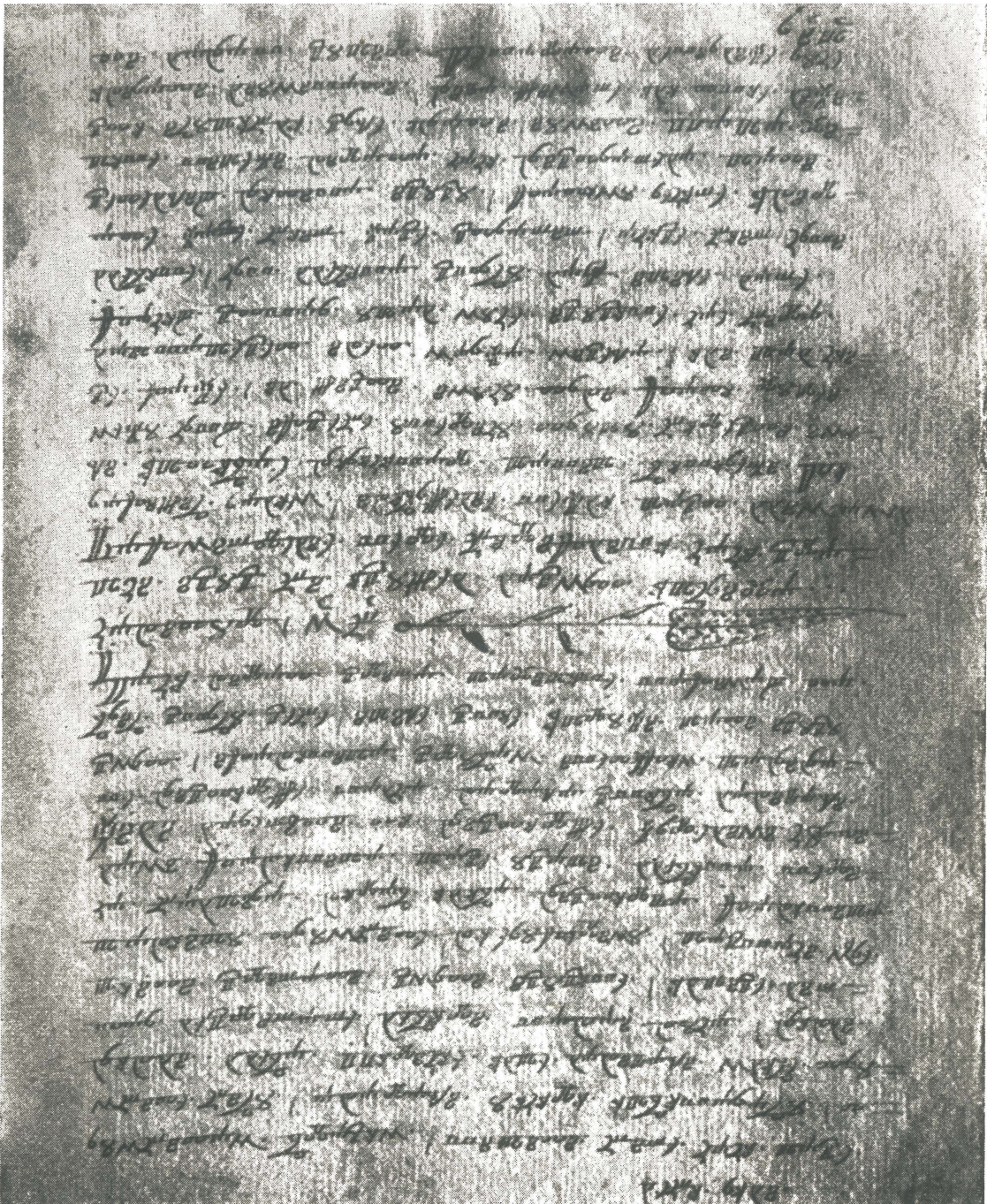
*Rukopis Jugoslav. akademije u Zagrebu I. a. (naslovna stranica)*



Rukopis Jugoslav. akademije I. a. 86 (početak „Pistule“)

Razmischlanje, ali deuter, case. Zgod  
na Heberis, meu Bagom, i meu Anjela  
prid upucobienym Jusovim.  
Chapitul parui. i.

Budući dugo, i ueliko vreme je al uag narod Chou  
casobi, nigli reblo, scot kucob gaiscob u uelich bni  
nab, ne uiderobi ni poznayuti i Zrachu od milosti  
Bozyc. Nisobore nemogarec uelich lica Bozycoga, sum  
nam bibu zatvarona ucata od slau. Chra gliehua  
Heberchoga. Sui libomo chachono pandini i prupasi  
ad patrie, i lidine uate, a to ciceha griba Adamova  
i Ewina. To uiderobi i razmischlanje yuclsi oni. Zeb  
chi Grayane to yest sucti Anjeli mil Anici Suctog  
Troystua. Pocesse miluati narod Choucasobi, imazu  
uelichu gom nru i gtiuban suucha. Nisobore, xeghahu  
uaz da dabire odchupit Choucas. A uelichim nacinom  
prid upucobienym Jusovim pucere na tr nastoyati i  
uechite deuoti moiti. Sucti Troystua dabire yure uelich  
pil Choucas, damuse yure otuore ucata od slau. Heberche  
A zate padru nicice ofi chaliy Anjeli prid pristoye Suct  
toga Troystua, pocesse umigheho molchi i gnuorih.  
Nalimote Grogodine od uelichastua, da gmiuhayere Chou  
cha, i daga frimere oude, necha pored suucha uelich  
od slau. Tuyc, i nechase nagune naru Chri. Daba  
naru tonarica, i narsca druxeba izgale chada.





1



2



